



Shaping the future
www.customimplants.es

CUSTOMIMPLANTS®

TECHNICAL DOSSIER


November 2020

CUSTOMIMPLANTS®

Index

| | |
|--|--------------|
| CUSTOMIMPLANTS® | 4 |
| Introduction | 4 |
| Principles of Osteosynthesis | 6-7 |
| Introducción | 6 |
| Surgical complications of osteosynthesis with implants | 6 |
| First 3D solutions | 7 |
| CUSTOMIMPLANTS® solutions | 7 |
| CUSTOMIMPLANTS® additional services | 8-11 |
| Platform | 8 |
| Biomodels | 9 |
| Surgical guides | 9 |
| Orthesis | 9 |
| Implants | 9 |
| Product catalogue | 10 |
| TC protocols | 12 |
| Benefits | 14-17 |
| For the patient | 14 |
| For the doctor | 17 |
| CUSTOMIMPLANTS® quality | 18 |
| Research and development | 20-21 |
| Technology | 20 |
| Materials | 21 |
| Additional information | 22 |
| General terms of use | 22 |
| Surgical contraindications | 22 |
| Adverse effects | 22 |
| Precautions | 22-23 |
| Before the surgery | 22 |
| During the surgery | 23 |
| After the surgery | 23 |
| Recommendations on fragment fixation systems (FPS) | 23 |
| Fixation system | 23 |
| Distribution | 24 |
| Bibliography | 25 |

Contact

-  Telephone
(+34) 900 377 266
-  Email
comunicacion@customimplants.es
-  www.customimplants.es
-  Calle 16, nave 13. Polígono Industrial San Cibrao das Viñas.
32901 - Ourense

Disclaimer

The information is intended exclusively for healthcare professionals. A healthcare professional should always rely on his or her clinical and professional opinion when deciding which product is most suitable to treat a patient. Custom Implants SL do not provide medical advice and recommend that healthcare professionals be trained in the use of any particular product before using it in a procedure or in surgery. Before using any product from Custom Implants SL., the healthcare professional must always read the instructions which are inside the package, the label of the product and/or the instructions for use, included those for cleaning and sterilization, when applicable. The information provided is for the purpose of showing specific products as well as the wide range of Custom Implants products. It may occur that not every product be available in all markets due to their availability is subject to the medical or regulatory practice.

CUSTOMIMPLANTS®

INTRODUCTION

At CUSTOMIMPLANTS® we believe every patient is unique and requires personalized attention, especially when it comes to implants.

We provide implants and specific services for each surgery with the best treatment possible. CUSTOMIMPLANTS® design and manufacture custom-made implants to improve the patient's life quality and recovery following the professional advice.

More than 10 years of experience working with additive and CAD CAM technologies allow us to be flexible and provide the service and quality that identify CUSTOMIMPLANTS®. The essence of CUSTOMIMPLANTS® is to facilitate the professional with all the means to provide personalized attention to their patients, meeting his/her particular treatment. The doctor guides his requests for every clinic case and conducts the most convenient design for the patient. At CUSTOMIMPLANTS® we strive to perform our job through the doctor's eyes providing every patient the best solution.



Principles of Osteosynthesis

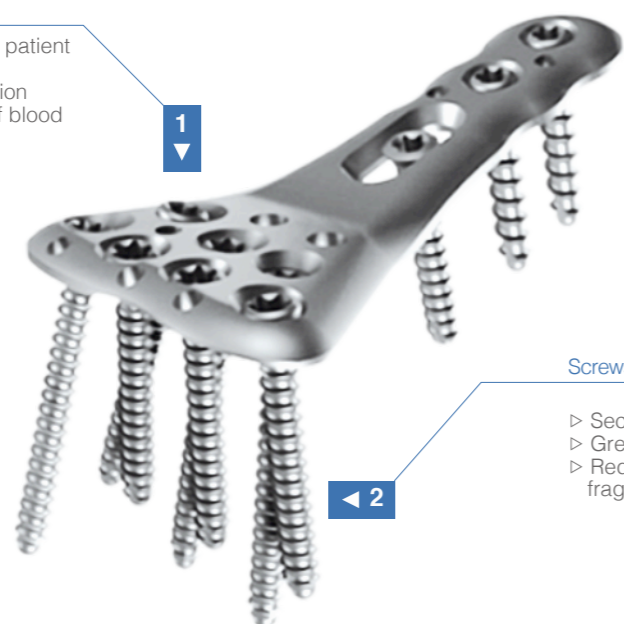
Introduction

In general terms, osteosynthesis principles can be summarized in 4 sections:

- ▷ **Fracture reduction and fixation** to restore anatomical relationships.
- ▷ **Stabilization:** fracture fixation providing absolute or relative stability as required by the type of fracture and injury.
- ▷ **Preservation of blood supply** to soft tissues and bone using the most careful handling and fracture reduction techniques.
- ▷ **Early and safe mobilization** of the injured part and the patient as a whole.

Plate

- ▷ Anatomically adapted to each patient
- ▷ Greater resistance
- ▷ It facilitates anatomical reduction
- ▷ It improves the preservation of blood supply



Screws

- ▷ Secure screw fixation
- ▷ Greater resistance and stability
- ▷ Reduction the risk of bone fragmentation

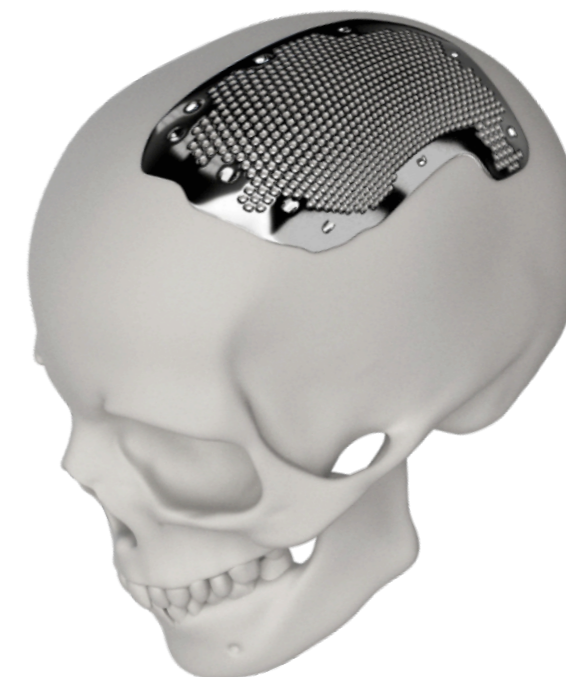
Complications of osteosynthesis surgical approaches using standard plates

The use of standard osteosynthesis plates show some inconveniences which the doctor has to face. The specialist in orthopedic surgery, neurosurgery or maxillofacial surgery has to adapt the material in the surgical field and manipulate the standard plate to adapt it to the injured area. This adaptation alters the plate effort capacity with respect to its original state and, occasionally, causes some difficulties when implanting the screws, affecting the traction forces. All manipulation involves an increment of minor risks and also increases the time of the surgery.

First 3D solutions

In recent years, the demand of advanced solutions to perform reconstruction processes due to fracture, oncology or congenital disease as well as some aesthetic surgery where an orthopedic surgeon or a maxillofacial surgeon is required, has increased considerably.

First 3D printing developments to manufacture implants require the previous fabrication of moulds which meant an increase in cost and also require longer waiting time and longer hospital stay, consequently, increasing the risk of nosocomial infection and delaying the beginning of mobility.



CUSTOMIMPLANTS® Solutions

CUSTOMIMPLANTS® patient-specific implants are designed to adapt to the anatomy of the patient and to ensure a precise fit that facilitate their placement and significantly reduce the time of surgery, the risk of associated infection and minimize rejection allowing a quality recovery in less time.

Once the doctor diagnoses and assesses the solution for the patient, the CUSTOMIMPLANTS team of professionals integrates it into a design programme that will allow the custom-made manufacture of the osteosynthesis material for that particular patient. By means of this integration, it is not necessary to manufacture previous moulds for subsequent 3D printing. **From the CT images and the professional's comments, the requested pieces are made and will be ready for surgery in a maximum time of 72-96 hours**, except in very specific cases

CUSTOMIMPLANTS uses **Titanium Ti6Al4V** with a degree of purity of 99.7% for the manufacture of parts which, thanks to its minimal porosity, make it the most prepared to support mechanical stress. The specificity of manufacturing plates of lower thickness in microns facilitates the fusion during the manufacture of the pieces unlike the techniques Electrom-beam additive manufacturing (electro bus metal) that, when making the fusion in a single process, require thicker layers in the manufacturing process, translating into a lower purity and ease of breakage.

CUSTOMIMPLANTS® allows:

- ▷ **A precise fit:** it adapts perfectly to the patient's anatomy.
- ▷ **Reduced fitting time:** there is no need for prior adaptation.
- ▷ **Less time in the surgical field:** no adaptation of the osteosynthesis pieces is required.
- ▷ **Minimization of infection risks** due to manipulation.
- ▷ **Reduction of manufacturing time** through CAD/CAM technologies controlled directly by the professional.
- ▷ Maximum manufacturing and delivery time: **96 hours**, except few cases.
- ▷ **Total adaptability** subject to the osteosynthesis capacity of the piece, the speed and compactness required by the professional.
- ▷ Design of **bone fragment replicas or complete bone replicas** for replacement operations in oncology or orthopaedic surgery (dysplasia, congenital problems, atrophy,...)
- ▷ **Adaptation of the plate surfaces to the doctor's needs.** The surfaces can be polished or porous with different hexagonal or octagonal frameworks.... depending on the osteosynthesis capacity of the piece, its speed and compactness as required by the professional subject to the area where it is to be used.
- ▷ **Versatility.** CUSTOMIMPLANTS® plates and implants can be adjusted to any screw and instrument available on the market. Inform us about the set of screws you use in the operating room and we will make sure they fit perfectly into your custom-made implant.

CUSTOMIMPLANTS® additional services

CUSTOMIMPLANTS® offers a range of additional services specifically for the professional.

Platform

CUSTOMIMPLANTS® engineering team collaborates with the doctor in the design of the implant. It is possible to order customized implants in a simple and safe way through the CUSTOMIMPLANTS® platform and with the support of our engineering team.

Our online platform is protected with the latest online security protocols and patient data is anonymized when dumping the medical image, ensuring the privacy of the patient's information and offering greater safety within the framework of the quality and health product system according to **UNE-EN ISO 9001:2015 and UNE-EN ISO 13485:2016, the European Union's General Data Protection Regulation 2016/679, and Organic Law 3/2018 of 5 December on the protection of personal data and guarantee of digital rights.**



Biomodels

At CUSTOMIMPLANTS® we produce 3D biomodels from medical images that help reveal often masked facts and plan surgery.

If you would like a biomodel, please contact your authorized distributor.

Surgical guides

We can help you prepare the surgery. Surgical planning allows to decide in advance the direction and depth of the cut, the implant and the screw. Surgical guides are a solution that allows the precise transfer of surgical planning to the operating room. These customized tools are designed to perfectly match the bone structures of your patient. They fit in a single location and allow a precise execution of the surgery.

If you require a surgical guide, please contact your authorized distributor.

Orthoses

CUSTOMIMPLANTS® orthoses and fixations facilitate the recovery of the neuromusculoskeletal system allowing a greater quality of life. The new 3D printing technologies and the use of new materials allow the manufacture of patient-specific orthoses or prostheses.

The materials used in the 3D printing are certified for use in contact with the skin and allow fabrication of lighter, more breathable and permeable orthoses which facilitate the doctors' follow-up and supervision of the patient and above all, reduce recovery times.

Implants

Once the implant has been designed and validated by the doctor, CUSTOMIMPLANTS® manufactures the implant in **Titanium Ti6Al4V** within the committed time. All the material is sterilized before delivery.

Product catalogue

a

ACETABULUM PLATE

Dynamic mesh
Acetabulum plate

ANKLE PLATE

Fixation plate
Arthrodesis plate
Hook plate
Malleolus plate

b

BREASTBONE/STERNUM PLATE

Box plate
X plate
Straight plate

c

CALCANEUS PLATE

Locking plate
Anterior process calcaneal plate
Calcaneal osteotomy plate
Posterior tuberosity calcaneal plate
Lateral wall calcaneal plate

CLAVICLE PLATE

Acromioclavicular plate
Superior clavicle plate
Midshaft clavicle plate
Anterior clavicle plate
Lateral clavicle plate
Medial clavicleplate
Variable angle clavicle plate
Hook clavicle plate

CMF PLATE

Plate for ortognatic surgery
Plate for facial fracture
Orbital floor plate
MTJ plate
Craniofacial mesh/plate
Preprosthetic surgery plate
Esthetic plates (chin, mandibular angle, malar prothesis)
Reconstruction plate

CONDYLAR PLATE

Condylar miniplate
Subcondylar locking plate
Condylar plate
Subcondylar plate
Supracondylar plate

e

ELBOW PLATE

Oleocranon plate

f

FEMUR PLATE

Pediatric implant
Femoral screw
Compression plate
Correction plate
Locking plate
Variable angle plate
Proximal plate
Lateral plate
Medial plate
Distal plate
Periprosthetic plate
Osteotomy plate

FIBULA PLATE

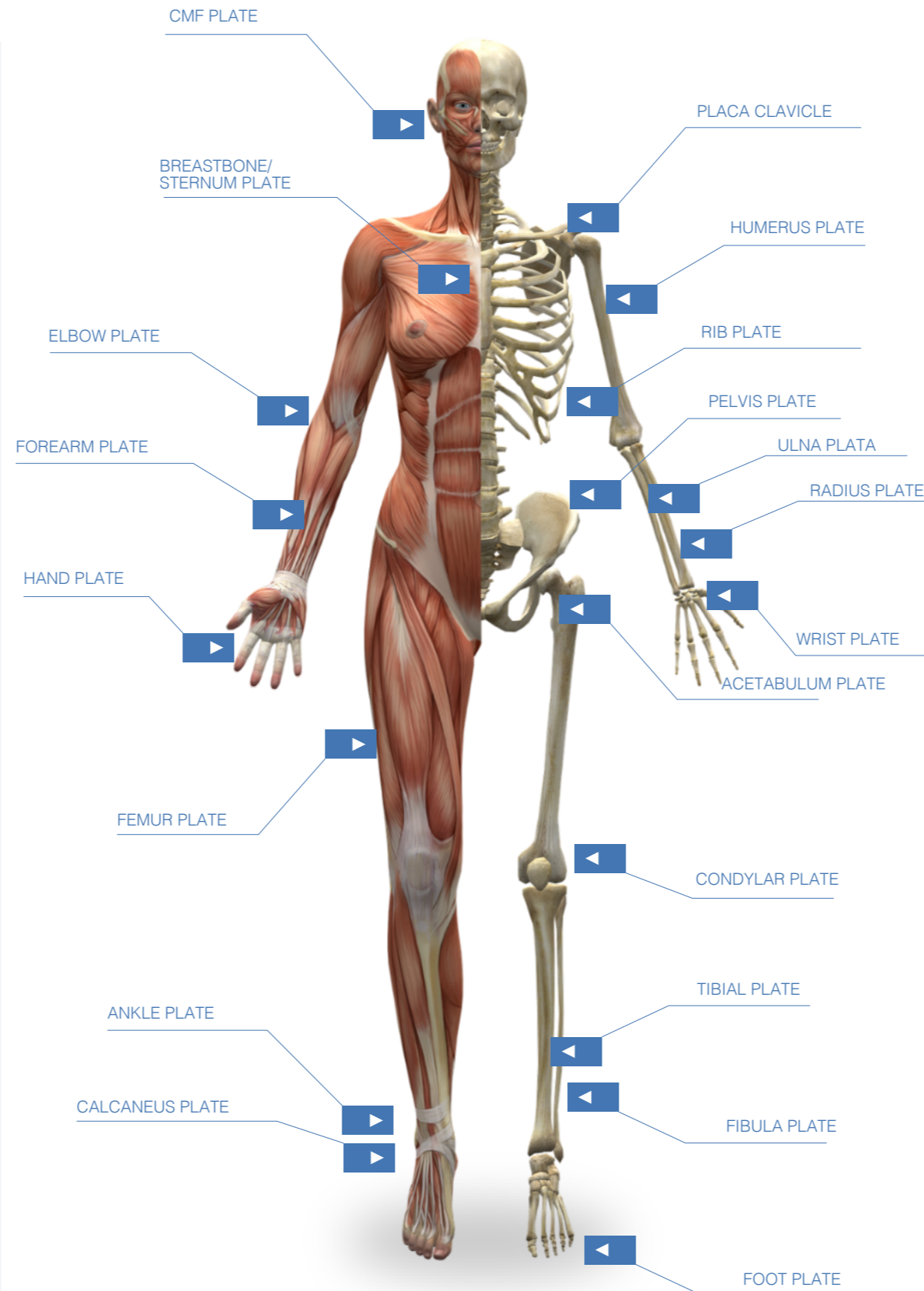
Posterolateral fibula plate
Lateral fibula plate
Distal fibula plate
Compression fibula plate
Postdistal fibula plate
Hook fibula plate
Anterior fibula plate

FOOT PLATE

Compreiion plate
Locking plate
Dorsal plate
Mtp plate
Osteotomy plate
T plate
H plate
L plate
Straight plate
Variable angle plate
Arthrodesis plate
Forefoot plate
Wedge block flat foot plate
Osteotomy foot plate
Lisfranc foot plate
Hallux plate
Arthrodesis lapidus foot plate

FOREARM PLATE

Curved/straight forearm plate



h

HAND PLATE

T plate
Y plate
Z plate
Straight plate
Curved plate
Fusion plate
Variable angle plate
Phalanx plate
Arthrodesis plate
Metacarpal plate
Dorsal plate
Mtf plate

HIP PLATE

Hook plate
Lateral plate
Locking plate
Variable angle plate
Pediatric hip plate

HUMERUS PLATE

Distal humerus plate
Medial plate
Posterolateral plate
Posteromedial plate
Dorsolateral plate
Locking plate with support
Compresion plate
Lateral plate
Inverse glenoid plate

p

PELVIS PLATE

Infrapectineal plate
Suprapectineal plate
Straight plate
Curved plate

r

RADIUS PLATE

Distal palte
Proximal plate
Palmar plate
Volar plate
Variable angle plate
Dorsal plate
Dorsolateral plate
Diaphysary plate
Poliaxial plate

RIB PLATE

Precontoured rib plate
Straight rib plate

s

SMALL FRAGMENT PLATE

Locking plate

t

TIBIAL PLATE

Component tibia base plate
Tibia implant for pediatric reconstruction
Partial tibia plate
Pilon tibia plate
Tibia compression plate
Distal tibia plate
Anterolateral tibial plate
Medial plate
Proximal plate
Lateral tibia plate
Variable angle tibia plate
Oteotomy tibia plate
Cemented tibia plate

u

ULNA PLATE

Variable angle plate
Proximal plate
Diaphysary plate
Distal plate
Lateral plate
Hook plate
Dorsal plate
Olecranon plate
Osteotomy plate

w

WRIST PLATE

Arthrodesis plate

CT Protocols

Data and images required by the team of doctors who will perform the surgery need to follow specific parameters to guarantee the quality of the implant.

CUSTOMIMPLANTS® provides radiology professionals with a series of protocols by area -foot, shoulder, etc. - with the recommended parameters based on the nature of the injury.

This documentation may vary and is reviewed and extended according to the new updates and/or new techniques and specifications of the radiology equipment.

Link to download the protocols:

<https://www.customimplants.es/protocolos>



Benefits

For the patient

CUSTOMIMPLANTS® assist the doctor improve the patients' quality of life as it allows a better recovery, minimizing pre-surgical risks and shortening waiting time prior to the surgery.

- ▷ The shorter manufacturing time and the availability in a short period of time contribute to **reduce the pre-surgical hospital waiting time and the risk of nosocomial infections.**
- ▷ **Rapid surgery allows the rehabilitation and physiotherapy process to begin earlier**, which is important mostly for older people.
- ▷ The **shorter time from admission to discharge means a better quality of life for the patient.**
- ▷ The customization and adaptation of the osteosynthesis and prosthesis plates **reduces the risk of reoperations.**
- ▷ In case of immobilization of the affected area is required after surgery, **CUSTOMIMPLANTS® design and manufacture patient-specific orthoses.**

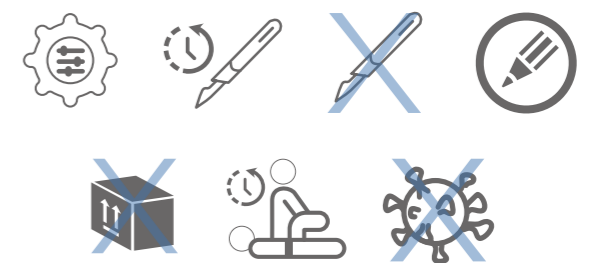




For the doctor

CUSTOMIMPLANTS® facilitate the tasks of the team of professional, thanks to:

- ▷ **The adaptability:** each piece is adapted to the requirements of the professional. There is no need to mould or adapt the part during the surgery, thus minimizing both an inadequate stress risk and mobility.
- ▷ **It favours the approach in smaller surgical fields.**
- ▷ **Reduction of:**
 - ▶ The **time of the surgery** thanks to the customized pieces.
 - ▶ The **mobilization time** for the beginning of the rehabilitation.
 - ▶ The **risk of nosocomial infections.**
 - ▶ The **failure rate.**
 - ▶ **Length of hospital stay.**
- ▷ **Decrease of:**
 - ▶ **Costs and time** (the pieces are previously sterilized).
 - ▶ **Stocks.** As every piece is personalized, there is no need to keep a stockage.



CUSTOMIMPLANTS® Quality

Quality and service is the key of CUSTOMIMPLANTS® success and our best guarantee.

The confidence and loyalty that more and more professionals and organisations are placing on us, are the driving force which promote our continuous improvement. For this reason, CUSTOMIMPLANTS® has implemented a management system with the aim of systematizing processes and clearly identifying the company's strong points and areas for improvement.

- ▷ CUSTOMIMPLANTS® complies with **UNE - EN ISO 9001 Y UNE-ENE ISO 13485, with the Regulation (EU) 2017/745**, as well as with its own protocol for the manufacture of tailor-made implants.
- ▷ **The Regulation (EU) 2017/745 of the European Parliament and Council dated 5th April on medical devices, amending Directive 2001/83/EC, Regulation (EC) No 178/2002 and Regulation (EC) N°. 1223/2009 and repealing Council Directives 90/385/EEC and 93/42/EEC**, provides that custom-made implants are classified as: "custom-made device" means "any device specially manufactured in accordance with a medical prescription of any person authorized by national law on the basis of his professional qualification, which includes, under the responsibility of that person, specific design features, and which is intended to be used only by a particular patient for the sole purpose of meeting his particular condition and needs". "Products as they are placed on the market, if they comply with Article 52(8) and Annex XIII. As it is not a serial product but a customized one, CE marking is not required by the legislation in force.



LGAI Technological Center, S.A. (Applus+) certifies that the **Quality Management System of the organization CUSTOM IMPLANTS, SL**, Polígono San Cibrao das Viñas, plot R6-13, sector C1, 32911, San Cibrao das Viñas (Orense), for the activities of: "Design and manufacture of custom-made implant, prostheses, fixation systems, surgical guides, orthosis and anatomical models by means of CAD/CAM applications and additive technologies, 3D printing and machining complies with the requirements of the **UNE-EN-ISO standard 9001:2015 and UNE-EN ISO 13485:2016**

INITIAL ISSUE: 06/11/2020

EXPIRY DATE: 05/11/2023

Research and Development

At CUSTOMIMPLANTS® we do research to develop new ways to improve our products and personalized services. Our goal is constant improvement and business excellence in the field of trauma, orthopaedic and maxillofacial surgery. As an innovative company we are always open to participate in the development of R+D+i projects.

Tecnología

At CUSTOMIMPLANTS® we use state-of-the-art manufacturing techniques such as high-precision milling and 3D printing to achieve the perfect end result. The combined application of different production methods creates new synergies. The right combination of the main market references in each of the technological disciplines allows CUSTOMIMPLANTS® to offer innovative solutions.



Materials

Ti6Al4V is a high strength titanium alloy successfully used in orthopaedic applications characterized by high corrosion resistance, high mechanical strength and biocompatibility. Grade 23 Ti6Al4V is characterized by low oxygen content and is suitable for medical applications as well as other applications allowing higher oxygen concentrations. Titanium promotes osteointegration and can be sterilized by all common methods.

The main properties of Titanium are:

- ▷ Light weight, tensile strength
- ▷ Steady material
- ▷ Biocompatible
- ▷ Excellent corrosion resistance

CHEMICAL COMPOSITION

| Elements | CONCENTRATION elements (WT%) ASTM F136/B348 |
|----------|---|
| Ti | Balance |
| Al | 5.5 - 6.5 |
| V | 3.5 - 4.5 |
| Fe | Max 0.25 |
| O | Max 0.13 |
| N | Max 0.05 |
| C | Max 0.08 |
| H | Max 0.0125 |

PHYSICAL PROPERTIES

| Propertes | Value |
|-------------------------------|-------|
| Densidad (g/cm ³) | 4.4 |
| Fuerza de tensión UTS (MPa) | >900 |
| Fuerza de producción (MPa) | >850 |
| Módulo de Young (GPa) | >105 |
| Alargamiento (%) | <12 |



Additional information

General terms of use

CUSTOMIMPLANTS® fixation systems are intended for the fixation of bone fractures, bone reconstructions and osteotomies. We offer multiple fixation characteristics and different sizes.

The implants are made of medical grade titanium. As it is a custom-made product, pre-planning is needed to obtain definition of the best fit.

Surgery contraindications

- ▷ Active or latent infection, sepsis, osteoporosis or in patients with immune deficiencies
- ▷ Physiologically or psychologically unfit patient.
- ▷ Inadequate neuro-vascular, skin or bone condition.
- ▷ Irreparable tendon system.
- ▷ Possibility of conservative treatment.
- ▷ Growing patients with open epiphyses.
- ▷ Patients with a high level of activity.
- ▷ Patients with previous sensitisation to stainless steel.
- ▷ Patients with certain metabolic diseases.
- ▷ Patients who exhibit disorders that could cause the patient to ignore the limitations of fixation, not following the indications for post-operative care.
- ▷ Patients who are skeletally immature and that the implant should not alter growth.

Adverse effects

- ▷ Allergic reactions to materials; sensitivity to metal, which can cause histological reactions, pseudotumours and lesions associated with aseptic lymphocytic vasculitis (LAVLA).
- ▷ Delayed wound healing; deep wound infection (early or late) that may require removal of the implant. Rarely, it may be necessary to amputate the limb.
- ▷ Sudden drop in blood pressure during surgery due to use of bone cement.
- ▷ Damage to blood vessels or bruising.
- ▷ Temporary or permanent nerve damage, peripheral neuropathies and subclinical nerve damage as a possible result of surgical trauma, causing pain or swelling of the affected limb.
- ▷ Cardiovascular disorders such as venous thrombosis, pulmonary embolism or myocardial infarction, among others.
- ▷ Fatigue fracture of prosthetic components can occur as a result of trauma, strenuous activity, improper alignment,

incomplete seating of the implant, duration of service, loss of fixation, lack of union or overweight.

- ▷ Dislocation, migration or subluxation of prosthetic components due to incorrect placement, trauma, loss of fixation, or laxity of muscle and fibrous tissue.
- ▷ Residual pain.
- ▷ Swelling

Precautions

Precautions before surgery

The surgeon must evaluate each situation individually, based on the clinical presentation of the patient, to make any decision regarding the selection of the implant.

The surgeon should be thoroughly familiar with the implant, the instruments and the surgical procedure before performing the operation.

The surgeon should contact CUSTOMIMPLANTS® or its authorized distributor to obtain specific surgical techniques for the product.

The surgeon should also use the medical devices according to the indications on their labels and the manufacturer's instructions for use, especially during insertion and removal.

The following factors, which may increase the risk of failure and may be critical to the final success of the procedure, should be taken into account in the selection of the patient: the patient's weight, activity level and profession.

All these factors can influence the duration and stability of the implant. An overweight patient can produce high loads on the implant, which can lead to implant failure.

The surgeon should consider the ability and the willingness of the patient to follow the instructions, and to control his or her weight and activity level.

No implant, including the implant/bone interface, can be expected to withstand the activity levels and loads that normal healthy bone would, and no implant can be expected to be as strong, reliable or durable as natural human bone.

The patient should not have unrealistic functional expectations for occupations or activities that include walking, running, heavy lifting or intensive muscular strain.

Other situations that carry a higher risk of failure are as follows:

- ▷ Uncooperative patient or patient with neurological disorders, unable to follow instructions.
- ▷ Major bone loss, severe osteoporosis, or procedures for which an appropriate implant fit cannot be obtained.
- ▷ Metabolic disorders that may prevent bone formation.
- ▷ Osteomalacia.
- ▷ Poor prognosis for adequate wound healing (e.g. pressure ulcer, end-stage diabetes, severe protein deficiency or

malnutrition).

- ▷ Pre-existing processes, usually considered for any surgery, such as bleeding disorders, prolonged treatment with steroids, immunosuppressive treatment or high-dose radiotherapy

The patient should be warned of the risks involved in surgery and made to understand the possible adverse effects.

The patient should be warned that the implant does not replace normal healthy bone and that it may break or be damaged as a result of certain activities or trauma.

The patient should also be warned of other risks that the surgeon may wish to disclose. The patient should also be warned to report to the surgeon any unusual noises or sensations, which could indicate a malfunction of the implant

Precautions during the surgery

There are specialized instruments that must be used to guarantee the precise implantation of the implant. Although it is not common, the instruments can break, especially after prolonged use or the application of excessive force. For this reason, the instruments should be examined before surgery for damage or wear.

Inspect the devices before use for damage during transport or storage, or for any obvious defect when unpacking that increases the possibility of fragmentation during an operation.

Implants require careful seating and adequate bone support.

For the correct selection of the implant, the following should be taken into account: the design, the fixation, the weight and age of the patient, the quality of the bone, the size, the degree of activity, the state of health before the operation, as well as the experience of the surgeon and his familiarity with the device. All these parameters can influence the duration and stability of the implant. Surgeons should inform patients about these factors.

Post-operative precautions

The patient should be warned of the limitations of reconstruction and the need to prevent the implant from bearing all the weight until proper fixation and complete healing has been achieved. Regular follow-up is recommended in order to monitor the position and condition of the implant components, as well as the condition of the bone.

Regular post-operative radiographs are recommended for careful comparison with early post-operative conditions to detect signs of long-term changes in position or loosening, bending or cracking of components.

There are inherent risks associated with the use of metal implants in an MRI environment, including component migration, thermal induction and signal distortion or interference in areas near the component(s). Thermal induction of metallic implants is a risk related to the geometry and material of the components, as well as to the power, duration and sequence of the MRI pulses. Since MRI equipment is not standardized, the intensity and probability of these manifestations with these implants are unknown.

Neither heating nor migration of the CUSTOMIMPLANTS® fixation system in MRI environments has been evaluated. Since these devices have not been evaluated, CUSTOMIMPLANTS® cannot recommend the use of MRI with these implants, as no data on the safety and accuracy of imaging studies are available.

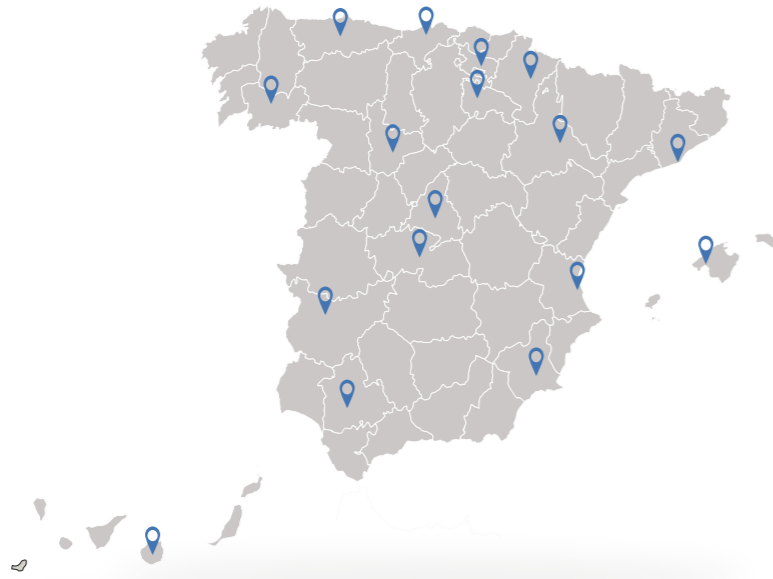
These components are passive metal devices, and as with all passive devices, there is a possibility of reciprocal interference with certain imaging modalities, including distortion of the MR image and scatter of X-rays on CT.

Recommendations on the fragments fixation system

- ▷ Inspect devices immediately after removal from the patient for signs of breakage or fragmentation.
- ▷ If the device has been damaged, keep it to assist in the analysis of the case by CUSTOMIMPLANTS.
- ▷ Carefully consider the risks and advantages of recovering the fragment as opposed to leaving it in the patient, and discuss them with the patient.
- ▷ Inform the patient of the nature and safety of the unrecovered device fragments, including the following information:
 - The composition of the material, size and location of the fragment.
 - The possible mechanisms of injury such as migration, infection.
 - Procedures or treatments that should be avoided, such as MRI scans in the case of metal fragments. This could help reduce the risk of serious injury caused by the fragment.

Distribution

CUSTOMIMPLANTS® is present in Spain through its authorized distribution channel, a solid distribution channel committed to the needs of patients and professionals and with the aim of providing coverage to all those surgeons and hospitals that require our services.



If you require further information, please contact CUSTOMIMPLANTS® and we will inform you on the authorized distributor in your area.

Bibliography

Del Pino Montes J. Epidemiología de las fracturas osteoporóticas: las fracturas vertebrales y no vertebrales.

Rev Osteoporos Metab Miner 2010; 2 supl 5:S8-S12.

Díaz+ Curiel M, Garcia JJ, Carrasco JL, Honorato J, Perez Cano R, Rapado A, y cols.

Prevalence of osteoporosis assessed by densitometry in the Spanish female population]. Medicina clinica 2001;116:86-8.

Díaz Curiel M, Carrasco de la Pena JL, Honorato Perez J, Perez Cano R, Rapado A, Ruiz Martinez I.

Study of bone mineral density in lumbar spine and femoral neck in a Spanish population. Multicentre Research Project on Osteoporosis. Osteoporosis international: a journal established as result of cooperation between the European Foundation for Osteoporosis and the National Osteoporosis Foundation of the USA 1997; 7:59-64.

Egol KA, Kubiak EN, Fulkerson E, Kummer FJ, Koval KJ.

Biomechanics of locked plates and screws. Journal of orthopaedic trauma 2004; 18(8):488-93.

Ramotowski W, Granowski R. Zespol.

An original method of stable osteosynthesis. Clin Orthop Relat Res 1991; 272:67-75.

Cronier P, Pietu G, Dujardin C, Bigorre N, Ducellier F, Gerard R.

The concept of locking plates. Orthop Traumatol Surg Res 2010. En prensa.

Smith WR, Ziran BH, Anglen JO, Stahel PF.

Locking plates: tips and tricks. Instr Course Lect 2008; 57:25-36.

Gautier E, Sommer C.

Guidelines for the clinical application of the LCP. Injury 2003; 34 supl 2:B63-76.

9. Haidukewych GJ, Ricci W.

Locked plating in orthopaedic trauma: a clinical update. J Am Acad Orthop Surg 2008; 16:347-55.

10. Rausch S, Hoffmeier K, Gueorguiev BG, Klos K, Gras F, Hofmann GO, y cols.

Comparative study on the strength of different mechanisms of operation of multidirectionally angle-stable distal radius plates. Z Orthop Unfall 2011; 149:694-8.

Hebert-Davies J, Laflamme GY, Rouleau D, Canet F, Sandman E, Li A, y cols.

A biomechanical study comparing polyaxial locking screw mechanisms. Injury 2013; 44:1358-62.

Lenz M, Wahl D, Gueorguiev B, Jupiter JB, Perren SM.

The concept of clavícula angle locking -evolution and mechanical evaluation of a recent technology. J Orthop Res 2015. En prensa.

Musgrave DS, Idler RS.

Volar fixation of dorsally displaced distal radius fractures using the 2.4-mm locking compression plates.

The J Hand Surg Am 2005; 30:743-9.

Wright TW, Horodyski M, Smith DW.

Functional outcome of unstable distal radius fractures: ORIF with a volar fixed-angle tine plate versus external fixation. The Journal of hand surgery 2005;30:289-99.

Roh YH, Lee BK, Baek JR, Noh JH, Gong HS, Baek GH.

A randomized comparison of volar plate and external fixation for intra-articular distal radius fractures. J Hand Surg Am 2015; 40:34-41.

Sproul RC, Iyengar JJ, Devcic Z, Feeley BT.

A systematic review of locking plate fixation of proximal humerus fractures. Injury 2011; 42:408-13.

Gardner MJ, Weil Y, Barker JU, Kelly BT, Helfet DL, Lorich DG.

The importance of medial support in locked plating of proximal humerus fractures. J Orthop Trauma 2007; 21:185-91.

Ehlinger M, Adam P, Di Marco A, Arlettaz Y, Moor BK, Bonnomet F.

Periprosthetic femoral fractures treated by locked plating: feasibility assessment of the mini-invasive surgical option. A prospective series of 36 fractures. Orthop Traumatol Surg Res 2011; 97:622-8.

Hou Z, Bowen TR, Irgit K, Strohecker K, Matzko ME, Widmaier J, y cols.

Locked plating of periprosthetic femur fractures above total knee arthroplasty. J Orthop Trauma 2012; 26:427-32.

Niikura T, Sakurai A, Oe K, Shibanuma N, Tsunoda M, Maruo A, y cols.

Clinical and radiological results of locking plate fixation for periprosthetic femoral fractures around hip arthroplasties: a retrospective multi-center study. J Orthop Sci 2014; 19:984-90.

Risteovski B, Nauth A, Williams DS, Hall JA, Whelan DB, Bhandari M, y cols.

Systematic review of the treatment of periprosthetic distal femur fractures. J Orthop Trauma 2014; 28:307-12.

Haidukewych G, Sems SA, Huebner D, Horwitz D, Levy B.

Results of polyaxial locked-plate fixation of periarticular fractures of the knee. J Bone Joint Surg Am 2007; 89(3):614-20.

Hoffmann MF, Jones CB, Sietsema DL, Tornetta P, 3rd, Koenig SJ.

Clinical outcomes of locked plating of distal femoral fractures in a retrospective cohort. J Orthop Surg Res 2013; 8:43.

Henderson CE, Kuhl LL, Fitzpatrick DC, Marsh JL.

Locking plates for distal femur fractures: is there a problem with fracture healing? J Orthop Trauma 2011; 25 supl 1:S8-14.

Bottlang M, Lesser M, Koerber J, Doornink J, von Rechenberg B, Augat P, y cols.

Far cortical locking can improve healing of fractures stabilized with locking plates. J Bone Joint Surg Am 2010; 92:1652-60.

Bottlang M, Fitzpatrick DC, Sheerin D, Kubiak E, Gellman R, Vande Zandschulp C, y cols.

Dynamic fixation of distal femur

Adams JD, Jr., Tanner SL, Jeray KJ.

Far cortical locking screws in distal femur fractures. Orthopedics 2015; 38:e153-6.

Wahnert D, Stolarczyk Y, Hoffmeier KL, Raschke MJ, Hofmann GO, Muckley T.

The primary stability of angle-stable versus conventional locked intramedullary nails. Int Orthop 2012; 36:1059-64.

Kaspar K, Schell H, Seebeck P, Thompson MS, Schutz M, Haas NP, y cols.

Angle stable locking reduces interfragmentary movements and promotes healing after unreamed nailing. Study of a displaced osteotomy model in sheep tibiae. J Bone Joint Surg Am 2005; 87:2028-37.

Pekmezci M, McDonald E, Buckley J, Kandemir U.

Retrograde intramedullary nails with distal screws locked to the nail have higher fatigue strength than locking plates in the treatment of supracondylar femoral fractures: A cadaver-based laboratory investigation. Bone Joint J 2014; 96-b:114-21.

Boyer P, Charles P, Loriaut P, Alkhaili J, Mylle G, Pelissier A, y cols.

Results of angular-stable locked intramedullary nails in the treatment of distal tibia fractures. Orthop Traumatol Surg Res 2014; 100:901-5.

Hontzsch D, Schaser KD, Hofmann GO, Pohlemann T, Hem ES, Rothenbach E, y cols.

Evaluation of the effectiveness of the angular stable locking system in patients with distal tibial fractures treated with intramedullary nailing: a multicenter randomized controlled trial. The J Bone Joint Surg Am 2014; 96:1889-97.

Jupiter JB, Winters S, Sigman S, Lowe C, Pappas C, Ladd AL, y cols.

Repair of five distal radius fractures with an investigational cancellous bone cement: a preliminary report. J Orthop Trauma 1997; 1:110-6.

Chow RM, Begum F, Beaupre LA, Carey JP, Adeeb S, Bouliane MJ.

Proximal humeral fracture fixation: locking plate construct +/- intramedullary fibular allograft. J Shoulder Elbow Surg 2012; 21:894-901.

Herrera M, Chapman CB, Roh M, Strauch RJ, Rosenwasser MP.

Treatment of unstable distal radius fractures with cancellous allograft and external fixation. J Hand Surg 1999; 24:1269-78.

Trompeter AJ, Gupta RR.

The management of complex periprosthetic humeral fractures: a case series of strut allograft augmentation, and a review of the literature. Strategies Trauma Limb Reconstr 2013; 8:43-51. Disponible en: <http://www.ncbi.nlm.nih.gov/pmc/articles/PMC3623919/>

Van de Pol GJ, Iselin LD, Callary SA, Thewlis D, Jones CF, Atkins GJ, y cols.

Impaction bone grafting has potential as an adjunct to the surgical stabilisation of osteoporotic tibial plateau fractures: Early results of a case series. Injury 2015. Disponible en: doi:10.1016/j.injury.2015.02.019

Moroni A, Toksvig-Larsen S, Maltarello MC, Orienti L, Stea S, Giannini S.

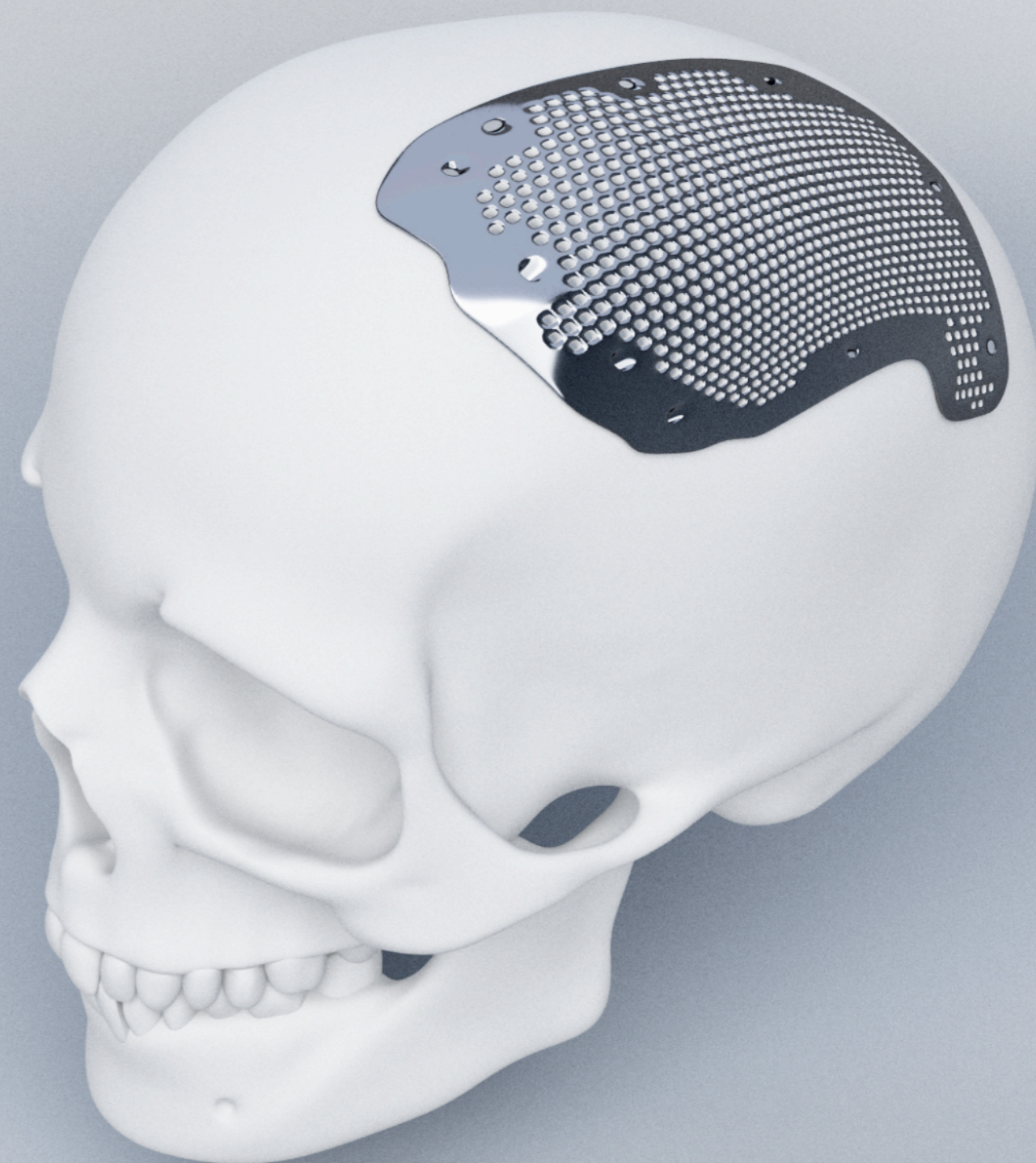
A comparison of hydroxyapatite-coated, titanium-coated, and uncoated tapered external-fixation pins. An in vivo study in sheep. J Bone Joint Surg Am 1998; 80:547-54.

Agholme F, Andersson T, Tengvall P, Aspenberg P.

Local bisphosphonate release versus hydroxyapatite coating for stainless steel screw fixation in rat tibiae. J Mater Sci Mater Med 2012; 23:743-52.

NOTICE

The products comply with **Annex VIII of Royal Decree 1591/2009 and Annex XIII of MDR Regulation (EU) 2017/745 of the European Parliament and of the Council of 5 April 2017** concerning medical devices for sale or use with different indications or restrictions in each of the different countries, as custom-made medical devices (**classification 2nd MDD Annex IX Rule 7-MDR Annex VIII Rule 7**). Products may not be authorized for use in all countries. The information contained in this material should not be construed as promoting or encouraging the use of the products, nor should the products be used in a manner not authorized by the laws, regulations, directives, of the country in which the user is located. Medical practitioners should ask their authorized CUSTOMIMPLANTS® distributor about the availability and use of the products described in all CUSTOMIMPLANTS® media. Patients should consult their medical practitioner any specific questions you may have about the use of the products described in this material and their suitability for your conditions.





Shaping the future

Calle 16, nave 13. Polígono Industrial San Cibrao das Viñas. 32901 - Ourense

www.CUSTOMIMPLANTS.es